

Inductive analog sensor

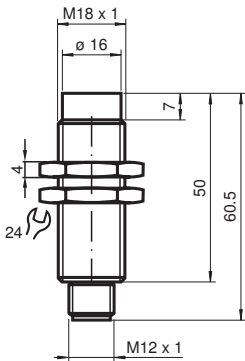
924AB3HM-L2P



- Inductive analog
- Voltage output



Dimensions



Technical Data

General specifications

Installation	non-flush
Measurement range	2 ... 5 mm
Output type	3-wire

Nominal ratings

Operating voltage	U_B	13.5 ... 30 V
Output signal		1 ... 9 V
Reverse polarity protection		yes
Short-circuit protection		no
Recovery time		1 ... 20 ms
Load resistor		0 ... 2 kOhm
Switching state indicator		no

Functional safety related parameters

Release date: 2020-03-20 Date of issue: 2020-03-30 Filename: 451255_eng.pdf

Refer to "General Notes Relating to Pepperl+Fuchs Product Information".

Pepperl+Fuchs Group
www.pepperl-fuchs.com

USA: +1 330 486 0001
fa-info@us.pepperl-fuchs.com

Germany: +49 621 776 1111
fa-info@de.pepperl-fuchs.com

Singapore: +65 6779 9091
fa-info@sg.pepperl-fuchs.com

 PEPPERL+FUCHS

Technical Data

MTTF _d	1733 a
Mission Time (T _M)	20 a
Diagnostic Coverage (DC)	0 %
Output	
Output resistance	max. 50 Ω
Compliance with standards and directives	
Standard conformity	
Standards	EN 60947-5-2:2007 EN 60947-5-2/A1:2012 IEC 60947-5-2:2007 IEC 60947-5-2 AMD 1:2012
Approvals and certificates	
CCC approval	CCC approval / marking not required for products rated ≤36 V
Ambient conditions	
Ambient temperature	0 ... 60 °C (32 ... 140 °F)
Mechanical specifications	
Connection type	Connector plug M12 x 1 , 4-pin
Housing material	brass, nickel-plated
Sensing face	Ceramic
Degree of protection	IP67

Connection

